

## MF-7524-U11

High-speed, Flat-bed, 4 needle, Top & Bottom Coverstitch Machine

## MF-7524D-U11

Semi-dry-head, Flat-bed, 4 needle, Top & Bottom Coverstitch Machine

This model is best-suited to the process of splicing parts of products such as high-performance sportswear.



sportswear

swimsuit



MF-7524U11D60

### Features of the flat-bed, 4-needle, top & bottom coverstitch machine

The flat seamer sews the material while trimming it according to the sewing pattern. To do this, in the preceding process, the material has to be cut with the allowance to be trimmed by the flat seamer included. Sewing of the material exactly according to the sewing pattern is enabled and consistent seam quality is ensured by the use of this model. In addition, material loss which is caused by rough cutting of the material is eliminated. This machine allows the operator to carry out sewing in a posture that is the same as in the case of using a general-purpose sewing machine. This helps reduce the operator's workload.

### ● Thread path guide

The guide achieves the well-balanced feed of four different threads, thereby contributing to consistent sewing.



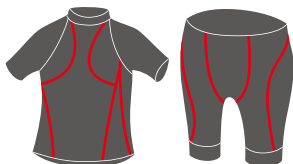
Application	Seam	Model No.	Number of needles	Number of threads	Needle gauge (mm)	Stitch length (mm)	Differential feed ratio	Presser foot lifting amount (mm)	Max. sewing speed (sti/min)
<b>MF-7500-U11</b> Universal type (basic type)		MF-7524-U11-D52	4	6	5.2	1.6~2.5 (Max 3.6)	1:0.7~1:2	4	4,200*
		MF-7524-U11-D60			6.0				4,200
<b>MF-7500D-U11</b> Universal type (basic type)		MF-7524D-U11-D60	4	6	6.0	1.6~2.5 (Max 3.6)	1:0.7~1:2	4	4,200

\*The maximum sewing speed can be reached when a stitch length is from 1.6mm to 2.5mm.

Processes where the flat-bed sewing machine (MF-7524) and the sewing machine with a feed-off-the arm capability (MF-3620) are used separately in the optimum way depending on different applications

### MF-7524U11

◎ Splicing process, etc.



### MF-3620 Series

◎ Under-sleeve splicing process, crotch splicing process, etc.

